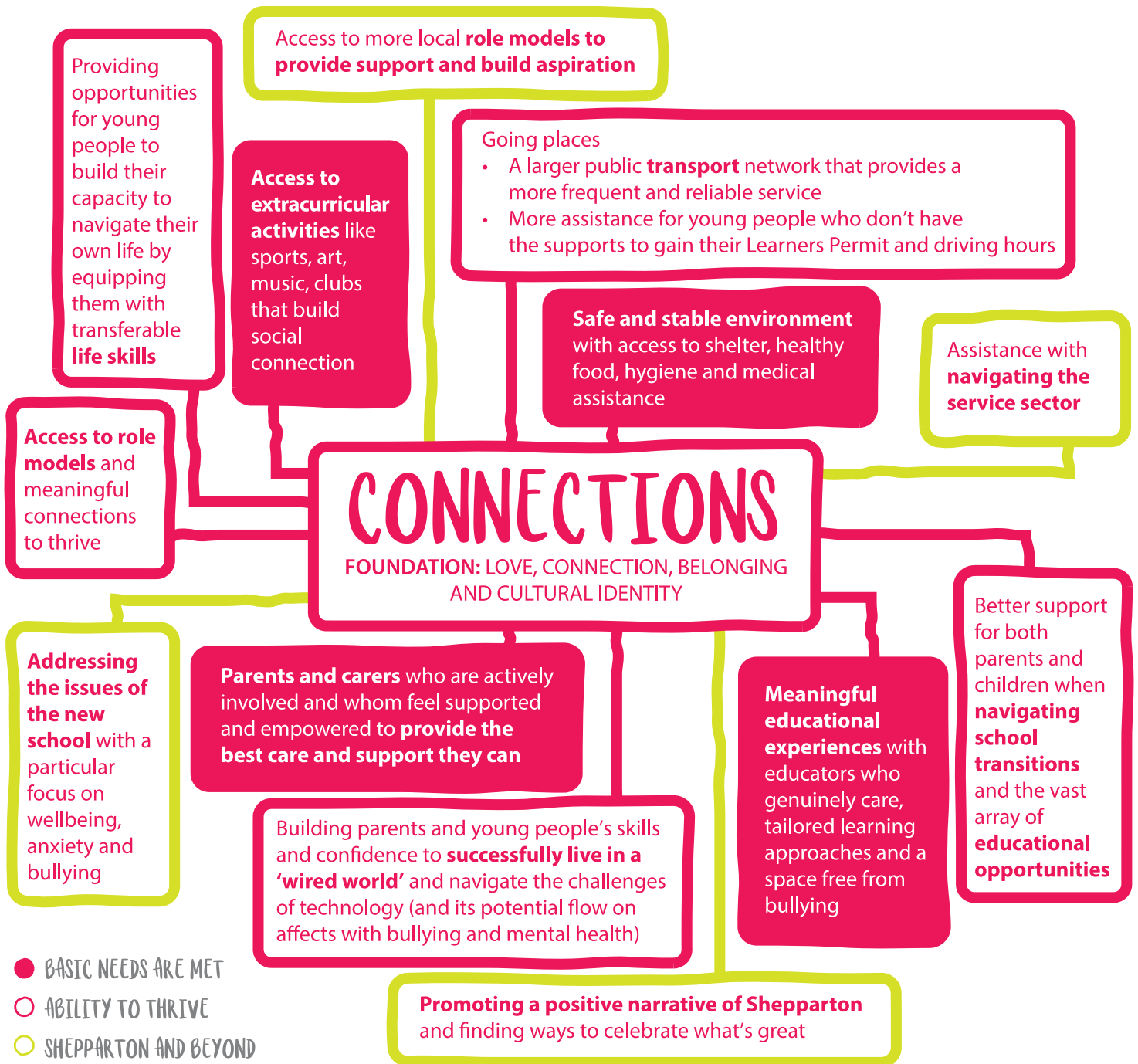


## KEY INSIGHTS

THIS IS THE SECOND ROUND OF CONSULTATION COMPLETED BY LIGHTHOUSE



- BASIC NEEDS ARE MET
- ABILITY TO THRIVE
- SHEPPARTON AND BEYOND

A full report will be available on website

FIND OUT MORE

Executive Officer: Lisa McKenzie  
E: [lmckenzie@gslp.com.au](mailto:lmckenzie@gslp.com.au) T: 0427 212 651 [www.gslp.com.au](http://www.gslp.com.au)

## SNAPSHOT OF THE PROCESS

DEEP LISTENING IS AT THE HEART OF OUR WORK. THE 2018 CONVERSATIONS BUILD ON THE ORIGINAL 1000 CONVERSATIONS IN 2015. THIS INFORMATION AND OTHER EVIDENCE CONTINUES TO FOCUS OUR COMMUNITY-LED EFFORTS TO DELIVER IMPROVEMENTS FOR YOUNG PEOPLE (0- 24 YEARS) IN GREATER SHEPPARTON, WITH A PARTICULAR FOCUS ON THOSE EXPERIENCING DISADVANTAGE.



We spoke to over 1000 people from all walks of life across our community. Conversations were around kitchen tables, work places, schools, clubs and kinders to name a few. It was clear community members welcomed the opportunity to delve deeply into the wellbeing of our kids.

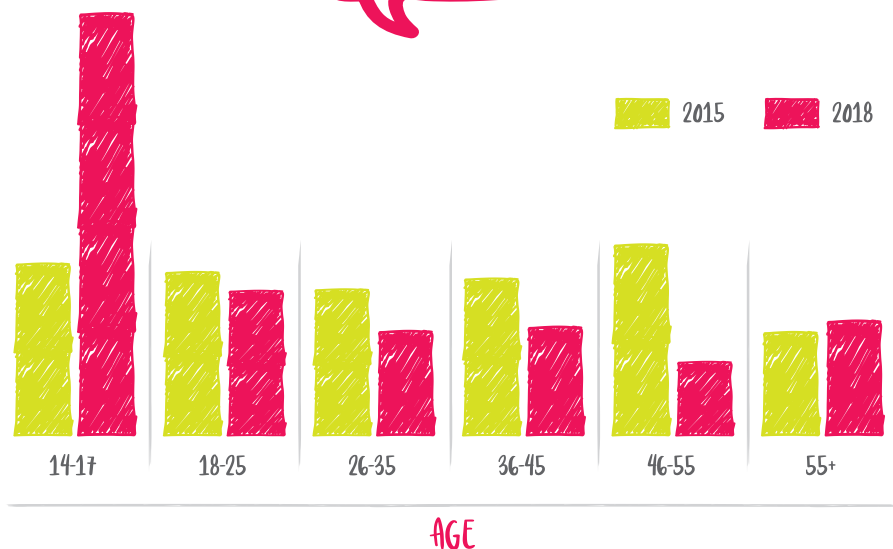
We also captured the voices of twenty-five children aged 2-9years. The 1000 conversation questions were modified to suit younger participants and common themes included; play, the home, community activities, connections and kids healthy behaviours.

### CONSULTATION QUESTIONS:

1. Tell me what you know to be important for raising happy, healthy children who do well at school and go on to study, work and lead productive lives
2. What would it take for every kids to thrive in Greater Shepparton community?
3. What do you think gets in the way?
4. What action do you think is most urgent?

**58% OF PARTICIPANTS ARE AGED 14-25**  
(UP FROM 35% IN 2015)

**57.6% FEMALE AND 40.6% MALE**  
(MALE PARTICIPANTS INCREASED FROM 34% IN 2015)



A full report will be available on website

FIND OUT MORE

Executive Officer: Lisa McKenzie  
E: [lmckenzie@gslp.com.au](mailto:lmckenzie@gslp.com.au) T: 0427 212 651 [www.gslp.com.au](http://www.gslp.com.au)