



**LighthouseProject**  
GREATER SHEPPARTON

# COMMUNITY SNAPSHOT 2018



# FOREWORD

2018 has been a year of amazing growth for Greater Shepparton Lighthouse.

We accepted \$1 million from the Department of Education and Training in December 2017 and at the end of January inducted more than fifty community leaders on to our new collaborative leadership tables.

They are leaders from across the community who are helping drive our collective decision-making and action. We have also established a youth leadership table to inform all of our work and lead their own action plans.

To ensure we stay on track in leading the change our community wants to see, we also went back out and spoke to 1,000 people about their hopes and dreams for young people in Greater Shepparton and fed that back into our strategy, table decision-making and action plans.

The community is at the heart of everything we do and are helping lead the change. To date this year we have engaged 447 volunteers in 21 settings including nine pre-schools, seven primary schools, four secondary schools, and three alternative settings.

We have been amazed at the way our partnerships large and small continue to grow. We have partnered with 79 businesses, organisations and funders this year and that's been everything from Higgins Bakery supplying excess food to the Haven, to a local couple quietly donating \$10,000 and the Rotary Club of Shepparton Central who are delivering a fantastic school mentoring and life skills program at Gowrie St Primary School.

Our staff has grown significantly this year. Their job is to lead, facilitate, enable, and draw people together around projects and ideas. They facilitate discussions, track and monitor change and broker new opportunities. Staff and volunteers have engaged with 198 kids at the Haven where we have provided 2403 hot cooked meals. They have also written and delivered school curriculum and provided access to work experience and run programs building life skills and resilience. They have written policy papers, advocated for change and informed government decision-making.

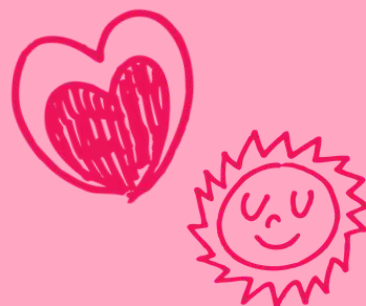
We have been scaling up for some time and we are now fully operational, with the funds and resources in place to fully lead the change we want to see. Our theory of change shows connections will drive the change and we thank you for your interest in our work to date and hope you will continue on the journey with us.



Adam Furphy,  
Lighthouse Chair



Lisa McKenzie,  
Executive Officer



## Deep Listening

Our community drives our work and we ensure this by listening carefully and responding to their priorities.

1000  
CONVERSATIONS 2018

Held with people from all walks of life across the Greater Shepparton community. Conversations were around kitchen tables, work places, schools, clubs and kinders to name a few. Our community welcomed the opportunity to delve deeply into the wellbeing of our kids.

KEY THEMES:



TRANSPORT

SHEPP IMAGE

EDUCATION



SOCIAL  
CONNECTION

DRUGS, ALCOHOL  
& SEX

EMPLOYMENT

BASIC NEEDS



MENTAL  
HEALTH

PARENTING

# Building the Movement

Leaders form across the community are driving the change they want to see...

5

## COLLABORATIVE LEADERSHIP TABLES

- Early Years & Primary Table
- Secondary & Transitions to work/further study
- Youth Empowerment Leaders



447

VOLUNTEERS



WORKING WITH **1230**  
YOUNG PEOPLE IN OUR COMMUNITY

38 business & organisation partnerships provide volunteers. 41 other business & organisational partnerships provide funding, resources and support.



All working towards the community vision that *Greater Shepparton offers all young people the chance to realise their full potential and thrive.* We will achieve this by focusing on...

### Our Three Obsessions

1

Increase number of children and young people with basic needs met.

2

Increase number of children & young people with access and opportunity to community, education and employment.

3

Increase number and quality of community connections.

# Early & Primary Years

9 PRE-SCHOOLS  
7 PRIMARY SCHOOLS

CONVERSATIONS WITH KIDS  
READING WITH KIDS  
BREAKFAST PROGRAM

HOMEWORK CLUB  
YEAR 6 LEADERSHIP  
BIKE PROGRAM

KNITTING CLUB  
MENTORING &  
LIFE SKILLS

SEAT - SIT, EAT AND TALK  
CAREERS PROGRAM

The foundations for success are developed in the early years of life. Our volunteers see first hand the changes that are possible. Volunteers are boosting vocabulary and literacy through conversations and increasing capacity through life skills.



**MENTORING & LIFE SKILLS** with Central Rotary Club at Gowrie Street Primary school sees Year 6 students being exposed to local activities and career options. Rotary volunteers take students out and about every other Monday. Teachers have noticed a peak in attendance on these days and they have become affectionately known as "Lighthouse Days!".



**SEAT - SIT, EAT AND TALK** sees volunteers from different industries enjoying lunch with students and talking about what they want to be when they grow up. Lunch is prepared with the help of Berry Street School VCAL Students.

"It's a great program...students talking and connecting with adults, they were eating healthy food, learning about table etiquette, practicing social skills" - Bree, SEAT Volunteer

# Secondary Years & Transition to Work or Further Study

4 SECONDARY  
SCHOOLS

TUTORING  
NUMERACY

INDUSTRY LINKS  
YEAR 9 CAMPS

ALTERNATIVE PATHWAY PROGRAM  
MALE LEADERSHIP/RESILIENCE

STRETCH  
LITERACY



The secondary years are often where any poor foundations start to impact on a young persons ability to realise their full potential and thrive. It is also a time where young people need the life skills to navigate some significant transitions in their life.

The schools, involvement of local businesses and dedicated volunteers are providing a strong foundation for students to succeed by creating links and building aspirations.

**INDUSTRY LINKS** is linking school curriculum to local industry with 39 business & organisation partners connecting local students to local opportunities.

590 students have participated in over 30 industry linking activities. Students are recognising the benefits with 78% saying the activities have helped them better understand the people & industries in their local community.



**LITERACY** is fostering a love of reading with Year 7 students at Shepparton High school. Students are not only improving their literacy but also developing important social connections. The school has documented that this program is directly impacting student results.



"..if it was not for you I would still be reading picture books or not even reading." - Yr 7 student to Literacy mentor



THE HAVEN IS A  
SAFE SPACE TO:

GATHER & RELAX

MAKE NEW FRIENDS

LEARN NEW SKILLS

MEET POTENTIAL MENTORS & ROLE MODELS

PARTICIPATE IN RECREATIONAL ACTIVITIES

ACCESS FOOD & OTHER NECESSITIES

HAVE FUN!

ACCESS OPPORTUNITIES TO

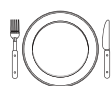
SUPPORT WELLBEING

Over 190 young people are using the Haven as their safe space to join in activities, meet new people and have a delicious hot meal.

Fifteen amazing volunteers and six dedicated staff love being with the young people and exposing them to opportunities and experiences in the local region and beyond. This year the Haven have been to St Kilda beach, Luna Park and the Melbourne Zoo. For some young people these have been their only experiences beyond the Goulburn Valley.

Many young people are gaining part time work, getting their Learner licences and even transitioning back to mainstream schooling as a result of their time at the Haven. The young people are giving back to their community and have volunteered their time:

- Planting over 300 trees in Nagambie with the Longwood Plains Conservation Management Network
- Collecting rubbish with RiverConnect; &
- Packing down Numurkah Foodbowl Festivities



2403

MEALS PROVIDED  
FOR YOUNG PEOPLE

"I feel like I have more friends &  
feel really safe" - 16 year old boy from the Haven



## From the kids...

"I am going to miss reading with you... I wish I could  
stay in year 7 so I could read with you everyday"

- Yr 7 student at conclusion of Literacy Program



"It was cool and inspiring - I really liked  
it and helps me realise I'm not alone"

- Yr 10 student, Male Leadership/Resilience

"It has motivated me to study & work harder  
because it is really important"

- Yr 9 student on Industry Links presenter



[www.gslp.com.au](http://www.gslp.com.au)



[www.facebook.com/  
greatersheppartonlighthouseproject/](https://www.facebook.com/greatersheppartonlighthouseproject/)



[lighthouseprojectshepparton](https://www.instagram.com/lighthouseprojectshepparton)